

Access in Ludlow

Third edition



South Shropshire
Access Group

The drawings on the front cover are reproduced with the permission of South Shropshire District Council's Environment and Development Department.

ACCESS IN LUDLOW

Page no. Description

| | |
|---------|--|
| 5 | Banks, Building Societies and Post Offices |
| 6 – 8 | Cafes and Restaurants |
| 9 – 10 | Car parking |
| 10 – 11 | Churches |
| 11 – 12 | Doctors' Surgeries, Opticians and Chemists |
| 12 – 13 | Estate Agents and Travel Agents |
| 13 | Garages and Filling Stations |
| 13 – 14 | Hairdressers |
| 14 – 15 | Places of Special Interest |
| 15 – 18 | Public Houses and Hotels |
| 19 – 21 | Recreation and Leisure Facilities and Meeting Places |
| 21 – 22 | Schools and Colleges |
| 23 – 36 | Shops: |
| 23 | Bakers and Confectioners |
| 24 | Books |
| 24 | Butchers |
| 25 | Cards |
| 25 – 26 | Charity Shops |
| 27 | China, Cookware and Gifts |
| 27 – 29 | Clothes |
| 29 | Electrical Appliances and Repairs |
| 29 | Florists |
| 30 | Greengrocers |
| 30 – 31 | Hardware |
| 31 | Health Foods and Whole Foods |
| 32 | Jewellers |
| 32 | Knitting and Sewing Supplies |
| 33 | Newsagents, Office Supplies and Printing |
| 34 | Photographers and Photographic Supplies |
| 34 | Shoes |
| 34 | Videos |
| 35 – 36 | Supermarkets, Large Stores and the Market |
| 37 | Transport |
| 37 | South Shropshire District Council |

NOTE

The research for this Guide was carried out by members of the South Shropshire Access Group. We have tried to present the information objectively and accurately, and to ensure that the details given are correct at the time of going to press (March 2004). Members of the Access Group cannot be held responsible for any misunderstandings or disappointments that may arise from the information given.

This Guide deals specifically with the access aspect of the buildings of Ludlow. You may find it helpful to refer to other booklets which give more detailed information on the history of individual buildings in the town, and if you want to explore the streets of Ludlow, we recommend the leaflet 'Ludlow Town Trail Notes'.

KEY

By the use of symbols, we have indicated how accessible a building is, and what problems there may be. We hope that this will help you in planning your visit and in getting around more easily in Ludlow.

There are two categories of accessibility:



Accessible to an independent wheelchair user, and to someone who is able to walk a short distance.



Accessible to a wheelchair user with a helper.

OTHER SYMBOLS



Accessible adapted toilet



Indicates that there is an Induction Loop or infra-red system to help hearing-aid users.



Indicates that information is available in large print or braille.



ACCESS IN LUDLOW

**FOREWORD – by The Right Reverend Michael Hooper,
President of the South Shropshire Access Group.**

The South Shropshire Access Group has done another very fine job in producing this Guide and I am very pleased to commend it to you.

Ludlow is a very historic town, and, like so many other mediaeval places, it is not the most accessible for people who use wheelchairs or who have difficulty in obtaining access because of steps or narrow entrances or other problems.

The Access Group has done a marvellous job in making us all aware of these needs in our community. We want people with disabilities to share as fully as possible in all the amenities and opportunities that there are in the town and this little book will enable this in so many ways.

†Michael Ludlow



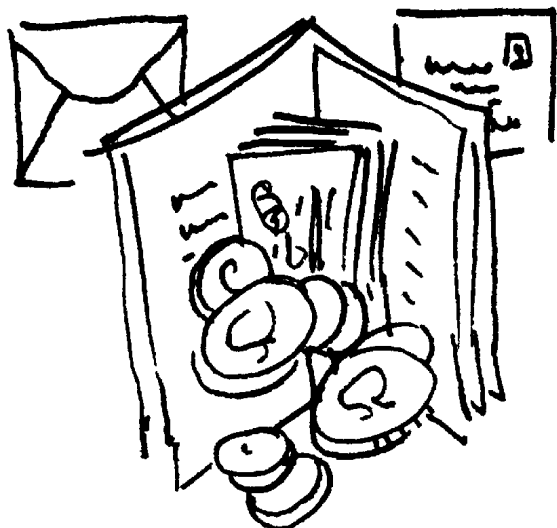
INTRODUCTION

The South Shropshire Access Group is a team of local volunteers who work to raise awareness of the access needs of people with disabilities. Through consultation and co-operation with the Local Authorities and with providers of goods and services, we help to bring about improvements in local access provision.

Since the South Shropshire Access Group was founded in 1993 the centre of Ludlow has recently been completely refurbished and access generally has been greatly improved. There are many more dropped kerbs and crossing-places, and there is a generous allocation of parking spaces for the cars of Blue Badge holders. By 2004, owners of businesses are obliged, under the terms of the Disability Discrimination Act, to provide reasonable access for all. Owners of some individual shops and businesses have already made good access provision for people with disabilities, and we hope that further improvements in access will be implemented whenever alterations are made to shops and business premises.

We are aware that it is not always easy in an ancient town to adapt historic buildings in accordance with statutory requirements, and inevitably there are some shops where access is difficult. However, a way round obstacles can usually be found, and, provided they know what is required, owners of shops and businesses are very willing to find ways of giving appropriate help.

We hope that you will find this booklet helpful as you travel around the town, and that you will enjoy your visit to Ludlow.



BANKS, BUILDING SOCIETIES AND POST OFFICES

Barclays Bank

3 King Street,
Ludlow



Access for wheelchair users has been provided behind the building where there is an automatic door and a

wheelchair lift to the ground floor. The interior is spacious. There is a hearing loop, and information in Braille and large print is available on request.

Lloyds TSB

16 Broad Street, Ludlow



Lloyds TSB is now completely accessible for people with disabilities. At the side entrance there is a ramp up to automatic sliding doors. The interior is spacious, and there is a lower counter for wheelchair users. There is a hearing induction loop, and information in Braille and large print is available on request. Outside the building there are two low-level cash point machines.

Nationwide Building Society (Local Branch Agency)

15 Tower Street, Ludlow. ☎ 874509



Level access. Lower counter section.

Staffordshire Building Society

2 The Bull Ring, Ludlow. ☎ 872943



There is one step at the entrance and easy access to the counter. It is hoped that during 2004 the building will be completely refurbished, providing level access and lower counter sections. There are parking spaces for cars of Blue Badge holders opposite the building.

Toilet accessible



Accessible to wheelchair users with assistance.



Accessible to wheelchair users.



Guide to symbols:

Ludlow Main Post Office Counter (One Stop Store)

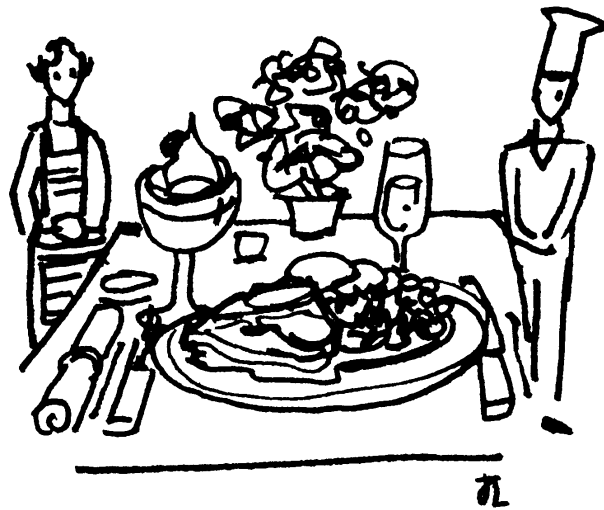
9 Tower Street, Ludlow. ☎ 872356

Level access through single door from sloping pavement. Arrangements have been made for wheelchair users to go directly to the left-hand section of the Post Office counter, bypassing the queuing system.

**East Hamlet Post Office**

6 New Road, East Hamlet. ☎ 872874

(Also general stores). Level access.

**CAFES AND RESTAURANTS****Castle Lodge Buttery**

Castle Square, Ludlow. ☎ 873628

Two steps at the main entrance. One step at side entrance.

**EGO Café Bar**

Quality Square, Ludlow. ☎ 878000

The surface of Quality Square is cobbled and uneven, but there is level access into the Café Bar, and there is an accessible adapted toilet.

**The Coffee House**

6 Parkway, Corve Street, Ludlow.

Level access into ground floor section.



The Courtyard Restaurant

2 Quality Square, Ludlow. ☎ 878080



One high step at the entrance to the lower part of the cafe. There are tables and chairs outside in fine weather.

De Grey's Café and Restaurant

5 Broad Street, Ludlow. ☎ 872764



Level access through double doors to the spacious shop and then through double doors into the first section of the café. There is one step up to the second section of the café. Waitress service. Traditional café atmosphere.

Dinham Hall Hotel

Dinham, Ludlow. ☎ 876464



There are two steps at the entrance. A portable ramp is available. Level access to lounges and restaurant.

The Feathers Café Bar

The Bull Ring, Ludlow. ☎ 875261



One step at the Corve Street entrance. There are accessible adapted toilets (M & F).

Ludlow Assembly Rooms (Access Award)

Mill Street, Ludlow. ☎ 878141



At the main entrance there is level access, through outer double swing doors (often closed) and then through automatic sliding doors, into the foyer. There is a lift to the two bars and to the cafe/restaurant areas where morning coffee, afternoon tea, snacks, meals are served from 10.00 a.m. until 9.30 p.m. There is an accessible adapted toilet.

Ludlow Fishbar and Restaurant

14 Upper Galdeford, Ludlow. ☎ 879300



Level access.

Shapla Balti House

58 Broad Street, Ludlow. ☎ 875153



The pavement outside is accessible only from the dropped kerb at Bell Lane or at Market Street. One step to double doors.

Toilet accessible



Accessible to wheelchair users with assistance.



Accessible to wheelchair users.



Guide to symbols:

Shapla Tandoori

17 Tower Street, Ludlow. ☎ 872033



There is a ramped area at the entrance and then level access into the restaurant.

'Fast Food'**The Plaice (Fish & Chips and Indian Take-away)**

133 Corve Street, Ludlow.



Level access through narrow door way.

Vaughan's Sandwich Bar

14, King Street, Ludlow.



Level access through narrow door way.

Note: There are restaurants at some of the Public Houses in Ludlow. (See list of Public Houses and Hotels).

If you are prepared to venture further afield, there are some really accessible restaurants within a few miles of Ludlow:

The Cookhouse (Access Award)

at The Clive Arms, Bromfield. ☎ 856565



There is one step at each of the two entrances, but a ramp is available. There is level access to the cafe, restaurant and bar areas, but two steps down into lounge area. There is an accessible adapted toilet.

The Café Bar

The Burford Garden Company, Tenbury. ☎ 810777

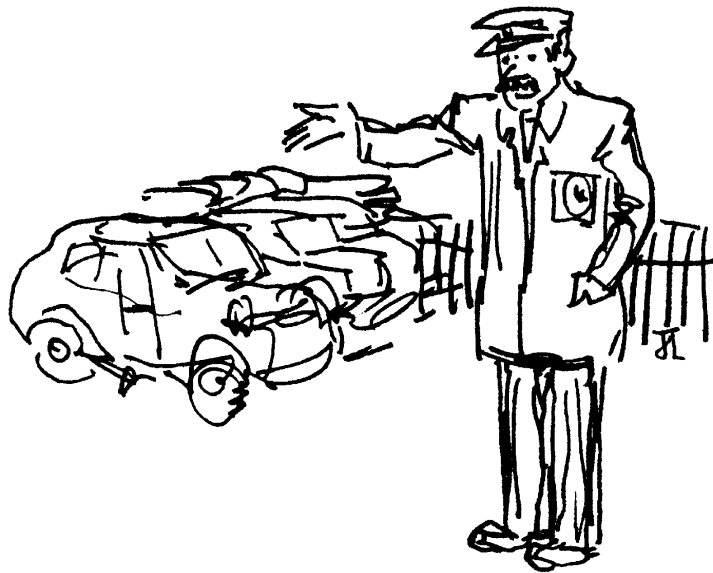


There is level access through wide entrance doors into the restaurant. There is an accessible adapted toilet.

CAR PARKING

On-street parking spaces for cars of Blue Badge holders:

There are spaces in the Bull Ring, in Broad Street, in High Street and in Mill Street (opposite the Assembly Rooms, and also outside the British Legion).



There are three main car parks – all ‘Pay and Display’ – with designated disabled parking spaces (free to holders of Blue Badges):

Castle Car Park

Entrance from Castle Square. ‘Pay and Display’. There are spaces designated for the cars of Disabled Badge holders. Sloping access to adapted toilet.



Lower Galdeford (Smithfield) Car Park

Corner of Lower Galdeford and Weeping Cross Lane

Entrance from Lower Galdeford. ‘Pay and Display’.

There are designated disabled parking spaces. Ramped access to an adapted toilet.



Upper Galdeford Car Park

Behind Somerfield Supermarket, with a lower section extending down to the former Portcullis area.

Entrance from Upper Galdeford and also from Station Drive.

There are designated disabled parking spaces behind Somerfield and also next to the Library and in the Station Drive section of the car park. Level access from Somerfield approach path to an adapted toilet.



Accessible to wheelchair users.



Accessible to wheelchair users with assistance.



Toilet accessible

Guide to symbols:

Note: The adapted toilets are kept locked. They are in the National Key Scheme. Keys can be obtained from the main reception area at South Shropshire District Council, if you do not have a RADAR key. The car park attendants at Castle Car Park and Upper Galdeford Car Park should have spare keys.

(RADAR keys can be obtained from The Royal Association for Disability and Rehabilitation, 25, Mortimer Street, London WIN 8AB. A list of toilets fitted with National Key Scheme locks is available from RADAR).

CHURCHES

St. Laurence's Church



There is level access to the porch and into the church. The whole of the nave is accessible, but the Nave Altar is on a raised area (one step). There are two steps (with a handrail) at the entrance to the Chancel, with further steps to the High Altar. There is a ramp up to the raised area (by the organ) at the entrance to St. John's Chapel and a step down into the Chapel. There are two steps up and one high step down at entrance to the Lady Chapel. There is one step up to the book stall area. A portable ramp is available for access to the book stall. There is a good sound system, and an Induction Loop for people with hearing difficulties.

St. John's Church

Gravel Hill, Ludlow



There are two steps at the entrance to the churchyard. There is a step at the entrance to the porch, and another step up into the church. There is a side entrance with level access into the churchyard via the gateway in Poyner Road. Inside the church there is a level access to all areas except the chancel. There is an Induction Loop.

St. Peter's Church (Roman Catholic)

Henley Road, Ludlow. ☎ 872906



There are steps at the main entrance, but ramped access into the Parish Centre, and level access from the Centre into the church. There is an Induction Loop. There is an accessible adapted toilet in the Parish Centre.

The Rockspring Centre

(Incorporating Ludlow Baptist Church)

Sandford Road, Ludlow. ☎ 874076



This building is completely accessible. There is an adapted toilet.

DOCTORS' SURGERIES, OPTICIANS AND CHEMISTS

Portcullis Surgery

Portcullis Lane, Ludlow.

☎ 872939



There is good access for people with disabilities. The building has tiled floors, wide doors and is well-lit.

There is a toilet adapted for disabled people. A wheelchair is available.

Station Drive Surgery

Station Drive, Ludlow.

☎ 872461



There are handrails along a sloping path leading to the entrance. There are automatic swing doors (opening outwards) to the lobby, and double doors to the waiting area. There is a hearing loop at the reception counter. The building has a spacious waiting area and a wide corridor. The consulting rooms have wide doorways. There is an accessible adapted toilet. A wheelchair is available. There is a car park further down the hill which is steep so it is quite difficult to push a wheelchair up to the Surgery.



Toilet accessible



Accessible to wheelchair users with assistance.



Accessible to wheelchair users.



Guide to symbols:

Rayners, Opticians

6 High Street, Ludlow. ☎ 872771

There is ramped access into the building. The main reception area is spacious and there is level access to the ground floor consulting room.

**Boots the Chemists**

34 The Bull Ring, Ludlow. ☎ 872548

Level access. Automatic doors, swinging inwards. Plenty of space for manoeuvring wheelchair.

**Lloyds**

(Access Award)

2 Upper Galdeford, Ludlow. ☎ 872230

Automatic sliding doors at entrance. Ramped access to the spacious interior and level access to counter. Prescription collection service.

**ESTATE AGENTS****Lane Fox**

26 The Bull Ring, Ludlow. ☎ 873711

One step up to porch and one step to the spacious office.

**Highfield Estate Agents**

5 High Street, Ludlow. ☎ 876333

One step up to the office.

**Humberts**

15 High Street, Ludlow. ☎ 877778

One step at entrance.

**Nock Deighton**

12 The Bull Ring, Ludlow. ☎ 875555

One very low step into spacious office.



Samuel Wood and Company

Tamberlane House, Buttercross, Ludlow. ☎ 875207

Level access. Plenty of space.



TRAVEL AGENTS

Lunn Poly Ltd.

46 The Bull Ring, Ludlow. ☎ 873424

There is a sloping access (ramped floor) into the spacious reception area. There are chairs and low counters and easy access to travel brochures etc.



GARAGES AND FILLING STATIONS

Ludford Bridge Service Station

Ludford Bridge, Temeside, Ludlow. ☎ 873909

This is the only petrol Service Station in Ludlow. Petrol is self-service but there is a Service Call receiver, and assistance is available.

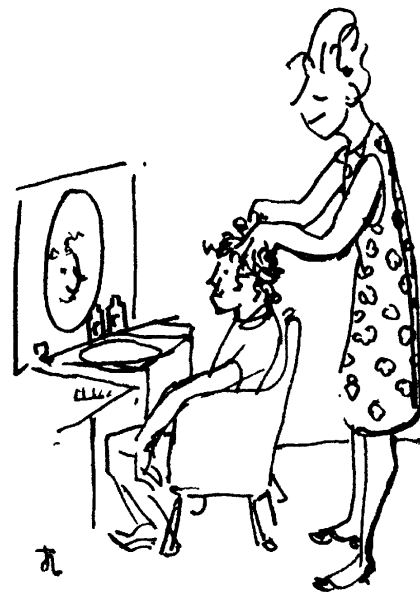


HAIRDRESSERS

Arte-Allure

3 Attorney's Walk, Bull Ring, Ludlow. ☎ 873127

The surface of the approach to the salon is rather rough and bumpy. There is one step at the entrance and level access inside the salon.



David & Alexandra Hairdressing

(Unisex)

4 The Parkway, Corve Street, Ludlow. ☎ 877184

There is one low step at the entrance and limited but level space inside the salon.



Toilet accessible



Accessible to wheelchair users with assistance.



Accessible to wheelchair users.



Guide to symbols:

Jigsaw Hair Designers

5 Valentines Walk, Broad Street, Ludlow. ☎ 877778

There is level access into the salon.

**New Image (Unisex)**

139, Corve Street, Ludlow. ☎ 872637

There is one very low step into salon, and one further step up to the wash basins area.

**The Nutty Barber (Men's Hairdressing)**

132a Corve Street, Ludlow. ☎ 876619

There is one low step into the salon.

**Quality Hair**

2 Quality Square, Ludlow. ☎ 873607

There is one very low step at the entrance, and level access throughout the salon.

**You Too**

1 Quality Square, Ludlow. ☎ 877277

There is one very low step at the entrance, and level access throughout the salon.

**PLACES OF SPECIAL INTEREST****The Castle** ☎ 873355

Entrance: The path has a rough, cobbled surface.

There is one step down to the Castle Shop, and there is an accessible adapted toilet. **Outer Bailey:** Level grassed area.

The bridge over the dry moat has a smooth surface. **Inner**

Bailey: The path through the entrance is rough and uneven.

There are no problems for wheelchair users when attending the play performed in the Inner Bailey during the Ludlow

Festival. Space for a wheelchair can be made at the end of a row of seats. (Mention this requirement when booking tickets).

The Castle Gardens

The entrance to the gardens is near the cannon. There are smooth level paths and lawns. There are steps at the Dinham end of the gardens, so no exit there for wheelchair users.



Castle Lodge

Corner of Mill Street and Castle Street

One low step down at the gate. Double doors at entrance to the house. There is one low step at the entrance to one of the rooms, but otherwise the ground floor is accessible to wheelchair users. The rooms are spacious and uncluttered and there is room to manoeuvre a wheelchair. Castle Lodge is open every day.



St Laurence's Church

Level access to the porch and into the church. The whole of the nave is accessible. There is a good sound system, with an Induction Loop for people with hearing difficulties. (See section on Churches for further details).



PUBLIC HOUSES AND HOTELS

The Blue Boar Inn

52 Mill Street, Ludlow. ☎ 872630

Level entrance and level access to bar. One low step down to restaurant. One step up to toilets. Level access from Mill Street through archway to courtyard.



The Charlton Arms Hotel

Ludford Bridge, Ludlow. ☎ 872813

Level access at entrance and to bar. Two steps down to lounge (Staff will help). Riverside patio with tables and seating.



The Church Inn

The Buttercross, Ludlow. ☎ 872174

One low step at side entrance (corner of Church Street and College Street) to bar and one step to restaurant.



Toilet accessible



Accessible to wheelchair users with assistance.



Accessible to wheelchair users.



Guide to symbols:

The Compasses Inn*1 Corve Street, Ludlow. ☎ 872967*

Level entrance through wide double doors. Easy access to bar.

**The Feathers Hotel***The Bull Ring, Ludlow. ☎ 875261*

There are steps at the main entrance, so the easiest access to the hotel is via the Cafe Bar where there is one step up. From the Cafe Bar there is level access to the restaurant and to the accessible adapted toilets. Alternatively, there is a ramp from the hotel car park into the building.

**The Globe Inn***Market Street, Ludlow. ☎ 874212*

There is a very narrow pavement, but there is level access through double doors to the courtyard and one step up from there to the restaurant.

**The Rose and Crown***Church Street, Ludlow. ☎ 872098*

One step down at entrance to bar. One step up to toilets. Level access to courtyard beer garden.

**The Unicorn Inn***Lower Corve Street, Ludlow. ☎ 873555*

One step down at entrance to bar/restaurant.

**The Wheatsheaf Inn***Lower Broad Street, Ludlow. ☎ 872980*

Level entrance to bar/restaurant. One step up to non-smoking section. Two steps to toilet.

*In addition, there is **The Sun Inn** which has received several Access Awards.**Corfton, Diddlebury. ☎ 01584 861239*

This is a very old building, but it has been made as accessible as possible, with ramps and handrails, and an



adapted toilet. Near the entrance there is a designated disabled parking space, and if you require help, sound the horn!

Bed and Breakfast accommodation in Ludlow:

The Cecil Guest House

Sheet Road, Ludlow. ☎ 872442



One step at main entrance. Two bedrooms (one double, one single) on ground floor. En suite showers (not adapted). Bed and breakfast. Evening meal by arrangement.

Southcot

Livesey Road, Ludlow. ☎ 879655



Ramped access from the car park to the front door. One ground floor bedroom with fully adapted wheelchair-accessible en suite shower room.

There is a **Little Chef** and **Travel Lodge** at Woofferton, near Ludlow. There is one room adapted for wheelchair users at the Travel Lodge ☎ 01584 711695.

Further afield, there is accessible accommodation at:

Jinlye Guest House

Castle Hill, All Stretton, Church Stretton SY6 6JP

☎ 01694 723243



Bed and breakfast. One ground floor bedroom is adapted for people with disabilities.

The Pines Trust (Access Award)

The Pines, Bishop's Castle SY9 5JY.

☎ 01588 638234



A specially adapted and accessible Self-Catering Holiday Centre for people with disabilities. There is a wheelchair-accessible path from The Pines to Bishop's Castle.

Toilet accessible



Accessible to wheelchair users with assistance.



Accessible to wheelchair users.



Guide to symbols:

The Travellers' Rest

(Access Award)

Affcot, Church Stretton. ☎ 01694 781275

Ramped access and two rooms with adapted en-suite facilities for wheelchair users. Accessible adapted toilets.



Self-catering Accommodation:

Botvyle Farm Cottages (Barn conversion)

All Stretton, Church Stretton, Shropshire SY6 7JN.

☎ 01694 722869

One of the cottages is accessible for wheelchair users.

Ramped access to entrance. Grab-rails in bathroom. Tourist Board Rating NAS 2.



Strefford Hall Farm

Affcot, Craven Arms. ☎ 01588 672383

The Coach House (stable conversion). One ground floor room with en-suite level access shower room. Tourist Board Rating NAS 3.



RECREATION AND LEISURE FACILITIES



Ludlow Assembly Rooms

(Access Award)

11 Mill Street, Ludlow. ☎ 878141



At the main entrance there is level access through double glass doors into the lobby, and then through automatic sliding doors to the spacious foyer and to the Box Office and pay-phone. Ramped access at the side entrance in Mill Street. There is a lift to all five levels of the building, so the café, bars, balcony, main auditorium, studio and function room are all accessible. There are wheelchair spaces in all parts of the building. There is a platform lift onto the stage in the main auditorium. There is an accessible adapted toilet. There are infra-red sound systems and an induction loop in the auditorium and studio. Guide dogs are welcome. Please let the Box Office staff know of your requirements when booking. There are designated disabled parking spaces opposite the main entrance.

Ludlow Library and Museum Store

7/9 Parkway (off Corve Street), Ludlow.

☎ 813600. (Also accessible from Upper Galdeford car park.)



There are three designated disabled parking spaces in the car park near the building. The library is fully accessible and very spacious. There are accessible adapted toilets.

Ludlow Museum

Castle Street, Ludlow. ☎ 873857



The Museum and the Tourist Information Centre have the same entrance. The pavement outside the building is ramped, so there is level access to the foyer. Entry to the Museum is via the Tourist Information Centre. There is level access throughout the Museum. The needs of people with disabilities have been thoughtfully considered. There is access to a toilet adapted for people with disabilities.

Toilet accessible



Accessible to wheelchair users with assistance.



Accessible to wheelchair users.



Guide to symbols:

The Millennium Green, Dinham



The Green is on the site of the old Ludlow swimming pool, with views of the river Teme, Whitcliffe and the Castle. The paths are accessible for wheelchair users.

South Shropshire Leisure Centre



(Access Award)

Bromfield Road, Ludlow. ☎ 874620

The building is fully accessible to people with disabilities. There are four designated spaces near entrance for cars of Disabled Badge holders. There is level access through automatic sliding doors to the spacious foyer. There is a lift to the first floor facilities including Fitness Suite, Pool viewing area and bar/cafeteria social area. There is a doctors' referral system and qualified staff give induction and fitness programmes. Some equipment is fully adaptable for wheelchair users. There are adapted toilet and changing facilities in both 'wetside' and 'dryside' areas. A hoist is always available during public swimming sessions, and shallow-angled steps can be put into the pool, on request, to assist easy entry. The diving pool has an adjustable floor (prior booking required). Staff are available to give assistance.

Tourist Information Centre



Castle Street, Ludlow. ☎ 875053

Entrance is from ramped access shared with Museum. Plenty of room to manoeuvre a wheelchair. Good access to counter with lowered section at wheelchair level. Access to adapted toilet. Copies of "Access in Ludlow" are available here.

Victory House

Royal British Legion, Mill Street, Ludlow. ☎ 873109



Level entrance and level access to bar and club room. There is an accessible adapted toilet. There are two designated disabled parking spaces outside the building.

MEETINGS, CONFERENCES, SOCIAL GATHERINGS, PARTIES ETC.

St. John Ambulance Brigade Hall

(Ludlow Division H.Q.)

Smithfield, Ludlow. ☎ 872992

Car park near entrance. Level access into building and to all rooms. Toilet is accessible but it is not fully adapted for people with disabilities.



The Bishop Mascall Centre (Access Award)

Lower Galdeford, Ludlow. ☎ 873882

There is a car park at the Centre. Ramped access to Fletcher Wing (left hand side of building) and level entry through heavy (push) door. At front entrance (right hand side of building) there is a short ramp, a small lobby and two fire doors which are not very easy to negotiate. All the rooms on the ground floor are accessible, and there are adapted toilets.



The British Red Cross Centre

Smithfield, Ludlow. ☎ 874422

Car park near entrance. One very low step into the building, and level access to all rooms. Accessible toilet, but no fixed grab-rails.



SCHOOLS AND COLLEGES

Ludlow County Infants' School

Sandpits Road, Ludlow. ☎ 872765

Level access to main building and some classrooms. Other classrooms are in demountable buildings with steps.



Ludlow County Junior School

Clee View, Ludlow. ☎ 873602

Ramps have been built to enable pupils with disabilities to attend this school.



Toilet accessible



Accessible to wheelchair users with assistance.



Accessible to wheelchair users.



Guide to symbols:

St. Laurence's C.E. Primary School*Jockeyfield, Ludlow.* ☎ 872766

Level access into the school and to all classrooms. Ramped corridor between Infants' and Juniors' section. There is an accessible adapted toilet.

Ludlow C. E. School*Burway, Ludlow.* ☎ 872691

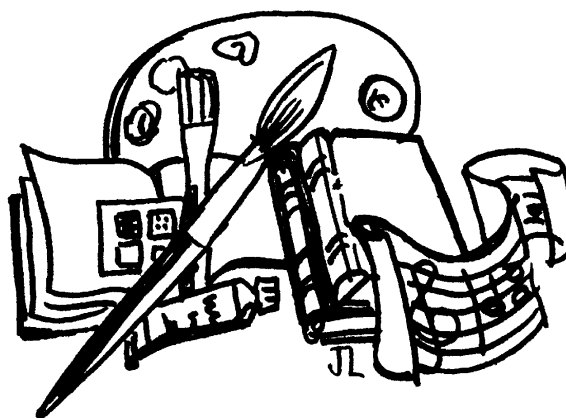
Ramps have been provided where necessary, and a lift has been installed to enable children with disabilities to attend this school.

Ludlow College ☎ 872846*(Access Award for Deaf Awareness)***The Harley Centre, Castle Square**

There are two designated disabled parking spaces in the car park. The building is completely accessible for people with disabilities, with level access throughout the ground floor, and a lift to the library and computer suite on the first floor. There is an adapted accessible toilet.

Palmers Hall, Mill Street ☎ 872846

Parts of the building are accessible. There is a ramped access to the computer room in Barnaby House. Current building work will significantly increase accessibility for people with disabilities.





Shops

BAKERS AND CONFECTIONERS

De Grey's

5 Broad Street, Ludlow. ☎ 872764

Level access through double swing doors into spacious shop.



S. C. Price and Sons

7 Castle Street, Ludlow. ☎ 872815

One step. Wide door. Adequate space.



Richard C. Swift

5 Parkway, Ludlow. ☎ 874767

One high step into shop. Staff will come to the door to serve.



R. Walton Ltd.

7 Market Street, Ludlow. ☎ 872088

Level access, but very narrow pavement.



Toilet accessible



Accessible to wheelchair users with assistance.



Accessible to wheelchair users.



Guide to symbols:

BOOKSHOPS

Castle Bookshop

(Books, cards, stationery, artists' materials, gifts)

5 Castle Street, Ludlow. ☎ 872562

Level access. Wide doorway. Narrow aisles between shelving are difficult for manoeuvring wheelchairs at busy times. Copies of "Access in Ludlow" are available here.



Ross's Books and Music

9 Church Street, Ludlow. ☎ 878119

One low step.



BUTCHERS

Carters Family Butchers

6 King Street, Ludlow. ☎ 874665

Very good, wide level access. Wide, open doorway.



Andrew Francis

at Kwik Save, 10 Castle Street, Ludlow. ☎ 874572

Level access through the store to franchise butcher.



A. H. I. Griffiths

11 The Bull Ring, Ludlow. ☎ 872141

One step to porch. Level access through double doors into shop.



Reg Martin and Sons

1 Market Street, Ludlow. ☎ 872008

One small step down into shop. Staff will bring purchases to the door if necessary.



D. W. Wall and Son

14 High Street, Ludlow. ☎ 872060

Level access. Wide doorway.





CARD SHOPS

Birthdays (*Also Thorntons*)

16 King Street, Ludlow. ☎ 876682

Level access. Wide doorway. Wide aisles between displays.



The Card Shop

12 Tower Street, Ludlow. ☎ 872872

One very low step at entrance. Level access to counter.



CHARITY SHOPS

Cancer Research UK

3 Castle Street, Ludlow. ☎ 878293

Level access. Wide door. Adequate space.



Cancer Research UK

12 King Street, Ludlow. ☎ 876786

Level access into shop. Plenty of space.



Cats' Protection

5 Old Street, Ludlow. ☎ 874171/873363

One step down into shop.



CHINA AND COOKWARE AND GIFTS SHOPS

Country Mercantile

131 Corve Street, Ludlow. ☎ 879444

Level access through narrow doorway.



The Feathers Gallery (also prints and picture framing)

20 The Bull Ring, Ludlow. ☎ 875390

Level access to porch and into shop.



The Marches Pottery

45 Mill Street, Ludlow. ☎ 878413

One step at entrance.



The Pottery Shop

Church Street, Ludlow

Wide doorway. One low step down into shop.



Pottery Plus

9 King Street, Ludlow. ☎ 873433

One low step down at entrance to shop.



Victoria Prints

10 High Street, Ludlow. ☎ 878088

Level access.



CLOTHES SHOPS

F. J. Bodenham Ltd. Outfitters

1 Broad Street, Ludlow. ☎ 872786

Level entrance from King Street to Men's wear department only. Stairs up to Ladies' fashions. Staff will bring garments to ground floor. Changing room on ground floor.



Cotswold Collections

12 King Street, Ludlow. ☎ 875612

Level access from King Street entrance to ground floor.
Access to lower floor from Market Street.



Toilet accessible



Accessible to wheelchair users with assistance.



Accessible to wheelchair users.



Guide to symbols:

Country Kaboodle (*also gifts & pine furniture*)
 146 Corve Street, Ludlow. ☎ 879992
 One step from sloping pavement at entrance.



Edinburgh Woollen Mill Shop

35 The Bull Ring, Ludlow. ☎ 876460

Level access. Wide doorway (double doors). Stairs to upper sales floor.



James & Co. Men's Outfitter

67 Broad Street, Ludlow. ☎ 873476

Level entrance through narrow doorway.



Jumper

45 The Bull Ring, Ludlow. ☎ 875825

One low step at entrance.



Mackays Ltd.

4 King Street, Ludlow. ☎ 872918

Level access through wide doorway at the lower entrance.

There is a ramp between the lower and upper sections of the ground floor, so the whole of this area is accessible.



Osborne Kellard

1 High Street, Ludlow. ☎ 876242

One low step at entrance.



Orvis

8 High Street, Ludlow. ☎ 877876

Level access.



Poyners (General Drapers and children's clothes)

Broad Street, Ludlow.

Level access at upper entrance and also through double doors at the lower entrance. Restricted space.



Seconds Ahead

18 King Street, Ludlow. ☎ 873615

Double (pull) doors at entrance. Level access to ground floor sales area.



Stag (Men's wear)

1 Old Street, Ludlow. ☎ 875500

Level entrance from ramped area, and a steep ramp down into the shop.



Style of Bewdley

1 Tower Street, Ludlow. ☎ 872133

One very low step at entrance.



ELECTRICAL APPLIANCES AND REPAIRS

Clee Hill Electrics

3 Corve Street, Ludlow. ☎ 872003

One step, almost level with the pavement, and so easy access into the shop. Restricted space.



Powerhouse

33 The Bull Ring, Ludlow. ☎ 873351

One shallow step up. Very heavy plate-glass door. Space to manoeuvre wheelchair.



FLORISTS

Florabunda

152 Corve Street, Ludlow. ☎ 874248

Level access at the side entrance in Parkway.



Lavender Blue

10 Broad Street, Ludlow. ☎ 877006

Level entrance. Much of the stock is on the pavement outside the shop.



Toilet accessible



Accessible to wheelchair users with assistance.



Accessible to wheelchair users.



Guide to symbols:

GREENGROCERS

Arthur Cade & Son (Wholesale & Retail Fruit & Potato Merchants)



Weeping Cross Lane, Ludlow. ☎ 872835

Open to the public. Level access to fruit and vegetable stall. Parking area near entrance.

Farmers



1 Mill Street, Ludlow. ☎ 873532

Level access into self-service shop. Displays of flowers, plants, fruit and vegetables at entrance.

The Fruit Basket



Church Street, Ludlow.

Much of the stock is displayed on the pavement outside the shop, and staff will come to serve outside if required.



HARDWARE, DECORATING AND D.I.Y. SHOPS

Ludlow Homecare, Kitchens, Housewares, D.I.Y. & Garden Centre



Ludford Bridge, Temeside, Ludlow. ☎ 873397

Level entry through automatic (sliding) doors to Garden Centre and into lower ground floor (D.I.Y.). Ramped access to Housewares. Large car park.

Rickards and Son (Ironmongers)

6/7 The Bull Ring, Ludlow. ☎ 872934

There is level access into the shop, but narrow doorways. There is not much room for wheelchairs, but customers receive individual attention, and there is a chair at the counter.



HEALTH FOODS, WHOLEFOOD & CHEESE SHOPS

Broad Bean

60 Broad Street, Ludlow. ☎ 874239

One step into the shop, and one step to upper section (cheese and delicatessen counter).



Julian Graves

1 Valentine's Walk, Ludlow. ☎ 879018

Level entrance, wide doorway.



Mouse Trap Cheese

Church Street, Ludlow. ☎ 879556

Level access.



Myriad Organics

22 Corve Street, Ludlow. ☎ 872665

Level access into spacious shop (self-service).



Toilet accessible



Accessible to wheelchair users with assistance.



Accessible to wheelchair users.



Guide to symbols:

JEWELLERS' SHOPS

David Benson Jeweller and Silversmith

The Buttercross, Ludlow. ☎ 872676

One low step onto porch and a semi-circular step (edge marked in white) down into the shop.



David James Jewellery

12 Tower Street, Ludlow. ☎ 874578

Level access.



David Lloyd Jeweller

7 King Street, Ludlow. ☎ 874937

Level access.



E. W. Sellors, Fine Jewellery

1 The Bull Ring Ludlow. ☎ 874686

Level access.



KNITTING, SEWING & CRAFT SUPPLIES

Fir Tree Cottage Crafts

11 Tower Street, Ludlow. ☎ 876181

Level access.

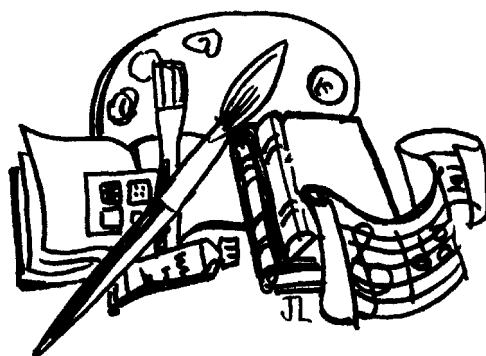


The Wool Shop

13 Broad Street, Ludlow. ☎ 872988

Level entrance. Narrow doorway. Restricted space. Inside the shop there is a step up to upper section (knitting patterns).





NEWSAGENTS, OFFICE SUPPLIES AND PRINTING

Brettons of Ludlow Ltd.

4 Valentine's Walk, Ludlow. ☎ 877177

Level access.



East Hamlet News (Also general stores)

8 New Road, Ludlow. ☎ 872575

Level access.



One-Stop Store

9 Tower Street, Ludlow. ☎ 877435

Sloping approach, then level access through single door into shop.



Roundabout Stationery Office Supplies

9 Broad Street, Ludlow. ☎ 877351

Level access, but space is very restricted by narrow aisles.



Stars Paper Shop

13 High Street, Ludlow. ☎ 872674

Level access into the shop and to the counter.



Toilet accessible



Accessible to wheelchair users with assistance.



Accessible to wheelchair users.



Guide to symbols:

PHOTOGRAPHERS AND PHOTOGRAPHIC SUPPLIES

Athena Photography

8 King Street, Ludlow. ☎ 873483

Slightly sloping ramped entrance down into the shop.



SHOE SHOPS

Briggs Shoes

47 The Bull Ring, Ludlow. ☎ 872937

One shallow step at entrance. Stairs to upper floor.



Stead and Simpson

10a King Street, Ludlow. ☎ 876426

Level entrance. Wide doors.



T. & M. Shoe Repairs

2 Lower Galdeford, Ludlow. ☎ 874146

Level access.



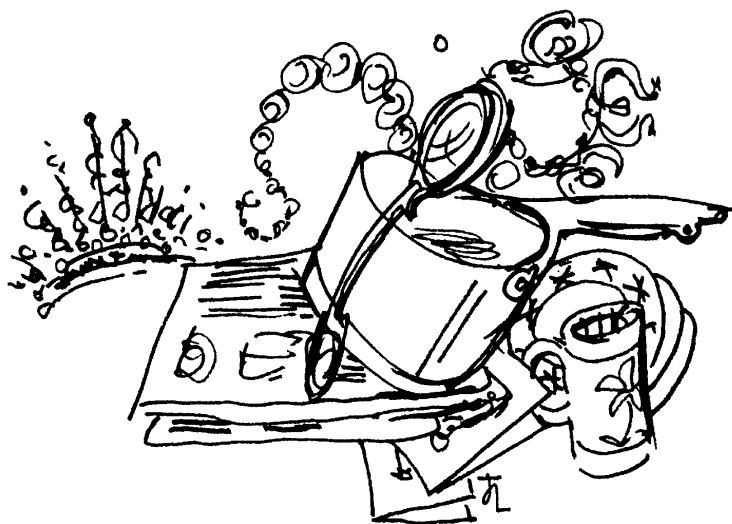
VIDEOS

Choices Video

55 Broad Street, Ludlow. ☎ 878291

Ramped step at entrance. Double doors.





SUPERMARKETS, LARGE STORES AND THE MARKET

Kwik Save Foodstore

10 Castle Street, Ludlow. ☎ 874102

There is level access into the store. Space is restricted, but there is room to manoeuvre a wheelchair at less busy times.



Somerfield Ltd.

Upper Galdeford, Ludlow. ☎ 876767

There are designated spaces for cars of Disabled Badge holders in car park behind the store. There is a sloping path from the car park and level access through automatically opening (sliding) doors into the store. Aisles are wide, with plenty of space between the shelf stacks. The checkouts are wide. Goods are packed by staff. Staff are available to take shopping to the car park and there is also a delivery service. Accessible adapted toilet outside the store, near car park.



Tesco Stores Ltd.

Access Award

Station Drive, Ludlow. ☎ 723600

There are designated spaces for cars of Blue Badge holders, and level access from the car park into the store. From Corve



Street there is ramped access into the store. There is a ramp from the café into the store. There is an adapted accessible toilet.

Country Linen (Towels, Bedding, Gifts)

9 Castle Street, Ludlow. ☎ 877380

One low step at entrance to spacious interior.



Countrywide, Agricultural Merchants

Weeping Cross Lane, Ludlow. ☎ 872431

Level access to the spacious store through wide automatic doors. Parking area in front of the building.



The Factory Shop

59 Broad Street, Ludlow.

Ramped entrance, and two further ramps giving access to the whole of the ground floor sales area.



One-Stop (Convenience Store)

9 Tower Street, Ludlow. ☎ 877435

Sloping approach, then level access through single door. Plenty of space.



Woolworths

1 Castle Street, Ludlow. ☎ 872032

Level access through automatic swing doors.



Ludlow Market

Castle Square, Ludlow.

There is ramped access at each side of the Market Square. At busy times, space is restricted by narrow paths stacked with goods. Wide variety of stalls on Mondays, Fridays and Saturdays. (Also on Wednesdays during the summer and specialist Markets are held on some Sundays throughout the year.)



TRANSPORT



Ludlow Railway Station

There is level access into the Booking Office, and to the north-bound platform. On the south-bound side, there is a ramp from Quarry Gardens to the platform. There is an accessible adapted toilet.

Wheelchair-accessible Taxis

Annette's Taxis ☎ 878787

P & M Taxis ☎ 878849

For transport advice and information:

Ring **TESS, Transport for Everyone in South Shropshire**, 01584 877717, Monday–Friday 10 am to 1 pm.

SOUTH SHROPSHIRE DISTRICT COUNCIL OFFICES



Stone House, Corve Street, Ludlow SY8 1DG. ☎ 813000

The District Council Offices are all accessible from the car park behind Stone House, and there is a designated disabled parking space. There are automatic (swinging) doors at the entrance to the main reception area, and there is an accessible adapted toilet.



Toilet accessible



Accessible to wheelchair users with assistance.

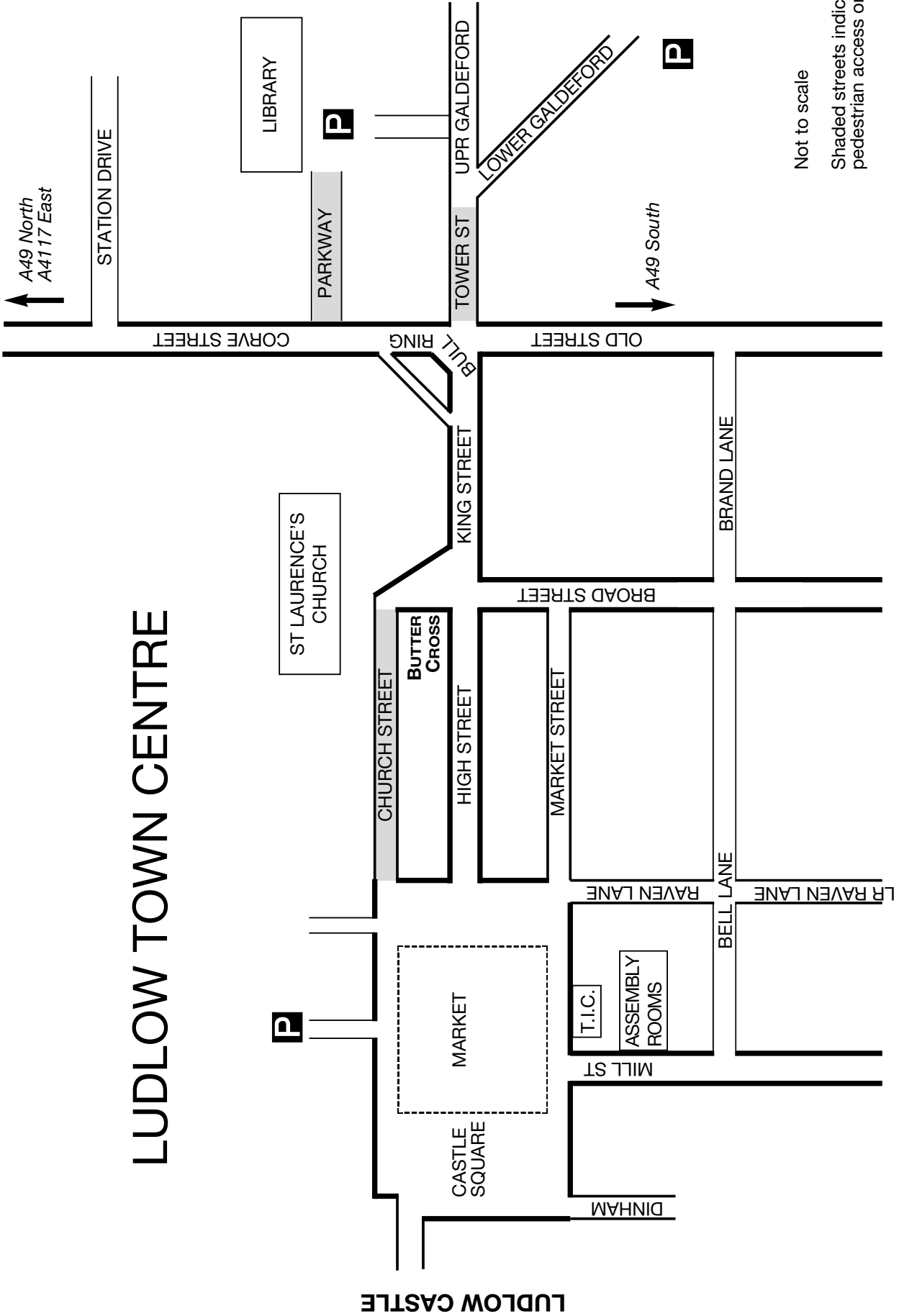


Accessible to wheelchair users.



Guide to symbols:

LUDLOW TOWN CENTRE



Not to scale
 Shaded streets indicate pedestrian access only

LUDLOW CASTLE

NOTES

ACKNOWLEDGEMENTS

We gratefully acknowledge the help of all those who have been involved in producing the Third Edition of 'Access in Ludlow'. Our thanks go to the members of The South Shropshire Access Group for their part in collecting and collating the information. We would also like to thank the Ludlow shopkeepers and owners of businesses for their increasing awareness of access requirements, and for their willingness to help whenever possible.

South Shropshire District Council supports the aims and work of the Access Group, and, through its Access Grants Scheme, encourages improvements in access provision. Further information can be obtained from the District Council's Access Officer at Stone House, Corve Street, Ludlow SY8 1DG. Telephone 01584 813000 (Direct: 813367).

Illustrations by Mrs J. Lissauer

Produced by Internet@TSP

South Shropshire Access Group

Working Together for

ACCESS



Large print copies available on request
from the Access Officer,
South Shropshire District Council
☎ 01584 813367

www.ludlow.org.uk/access

Web site sponsored by
Internet@TSP